

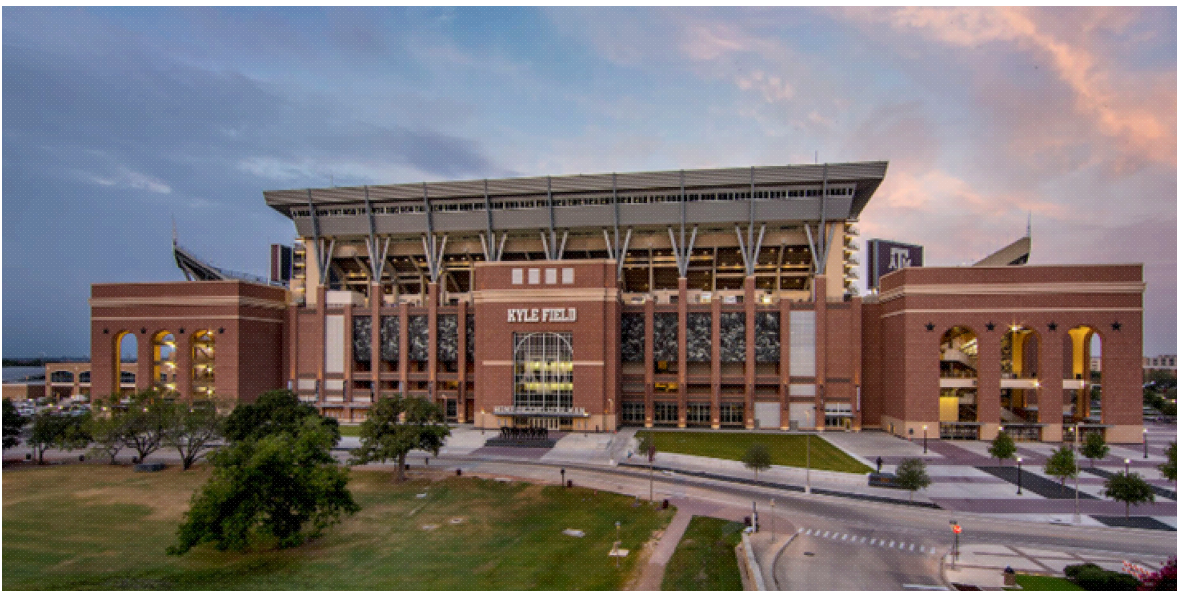
Click Here to Enable Article Interactive Features



PSI NEWS

January 2019 Vol. 3 Issue 1

PSI Erects Design Award Winner



The 2015 renovation of Texas A&M University's Kyle Field was, at that time, the largest-ever collegiate sports project in the United States. The \$485 million, 26-month redevelopment project included completely rebuilding the college stadium in two (2) phases to expand its capacity to 102,733 seats, making the stadium one of the five largest in collegiate football.

According to project requirements, the renovation was not allowed to affect the team's ability to play games in the stadium. This required the project to be completed in two (2) phases which covered two (2) active football seasons.

The project construction team were challenged to find creative ways to reduce cost and risk over the project's 26-month timeline. The decision was made to immediately employ a three (3) -shift, 24/7 work routine which required the majority of precast panels to be erected during the night-shift and at times, required two (2) shifts of erection.

Precast Services, Inc. began the first phase of erection on the East Half of the stadium in December of 2013, followed by the West Half after a controlled demolition of the existing structure on December 21, 2014. (See the demolition video [by clicking here](#)).

When all was said and done, Precast Services, Inc. erected over 1,800 exterior precast panels with inlaid brick covering a total façade of 311,000 square feet.

Project Foreman Karl Schneider, now a Project Manager for Precast Services, Inc., reflected that some of the challenges encountered were the erection of wall panels stacked 103' tall against steel framed structures; the tight schedule; and the continuous coordination with the many other trades working on site.

As was the case with this award winning project, Precast Services, Inc. looks forward to the prospect of erecting your next project in a manner which exemplifies the design of the completed structure.

[Click here to watch a time-lapse video](#) of construction activities at Texas A&M Kyle Field.

Project Spotlight

Tremont Tower, Orlando, Florida



Precast Services, Inc.' erection crew is busy erecting 365 pieces of architectural precast panels on the very challenging Church St. Plaza Tower (formerly The Tremont Tower).

The 601,225 sq. ft. tower, which broke ground in August of 2017, will feature an AC Marriott Hotel, 217,000 sq. ft. of Class-A office space, 7,500 sq. ft. of ground-level retail, an integrated parking garage, and a "Grand Central Station Like" Lobby that will connect

to a Sun-Rail Commuter Rail Station.

One challenging aspect of this project is the very small work areas on the West and East Faces of the structure. Approximately one (1) closed lane of traffic exists to work from on West Face of the structure along S. Garland Avenue and panels on the East Face of the structure are erected in strict coordination with Sun-Rail, whose live train tracks run adjacent to the structure, which will integrate a future rail station.

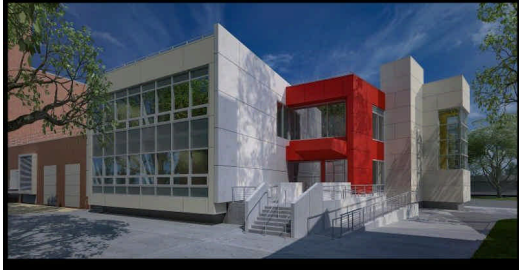
Another challenge is rotating the 31' long panels from their horizontal position on the trailers. Precast Services, Inc. is utilizing "flipper" racks which are bolted to the trailers at the fabrication plant, of which allows the panels to be hoisted vertically with the single line of the tower crane upon their arrival at the jobsite.

Due to the extended use of the tower crane by other trades during the day, the majority of precast panel erection is taking place during nighttime working hours.



[View the Live Web Cam!](#)

Redfern Apartment Utility Control Buildings Far Rockaway, New York



The Redfern Housing complex is a nine (9) building mid-rise residential development comprising of 604 apartments for the New York City Housing Authority, originally constructed in 1959 on an 18.78-acre site in the Far Rockaways.

As a result of damage to the entire electrical system from Hurricane Sandy (residents were trapped without power for days), a program was undertaken to construct a new electrical service and boiler plant building. Both of these buildings will be elevated above the established flood elevation to prevent them from being completely flooded as they were during Hurricane Sandy.

In addition, a new two-story 11,000 square foot Child Care and Community Center is being constructed to serve residents living in the seven story residential buildings within the Redfern Houses Complex.

Precast Services, Inc. was contracted to erect a combined total of 219 precast wall and hollow-core panels which give the building an identifiable presence, while the terra-cotta toned metal panels surrounding the entrance and other areas are compatible with the character of the surrounding brick residential towers. All of the glass featured on the facades have been designed to be hurricane resistant.

INDUSTRY NEWS

PCI Convention around the Corner



The PCI Convention is this February 26 through March 2 at the Kentucky International Convention Center in Louisville, KY. The event includes numerous networking opportunities, education sessions offering continuing education hours, PCI Committee and Council Meetings, and a dynamic trade show floor full of ideas to improve your business as part of our ongoing partnership with The Precast Show.

All PCI Education Sessions are included in your registration fee. When you purchase a PCI Full Conference or Daily Registration, you also gain access to NPCA's Education Sessions with no additional cost. (Member discount pricing will apply for any NPCA Courses with additional charges).

[Register Here](#)

Need a Quote On Your Next Project?

Since our inception in 1988, Precast Services, Inc.'s performance and proficiency is supported by the combined talents and expertise of our principle employees. This experience covers the spectrum from actual field experience to project management, and through divisional general management to upper management experience in the precast industry.

Precast Services, Inc. looks forward to the prospect of erecting your products in a manner which exemplifies the design of your completed structure.

[Submit Your Request](#)

[Website](#) [About Us](#) [Our Work](#) [Safety](#) [Contact](#)



Precast Services, Inc.
8200 Boyle Parkway
Twinsburg, OH 44087
Phone: (330) 425-2880



Follow us on social media!



[Visit our website](#)